



MERYWEN





MWD
architects
+ makers

The Merywen®

“Merywen” (Welsh) - Juniper

A highly insulated core clad in locally grown timber is the main feature of the Merywen design. Inspired by traditional Japanese architecture, it provides a versatile, economical and contemporary ancillary space to any main living quarters. It is also ideal as a camping pod for paying guests on glamping and camping sites or holiday parks.

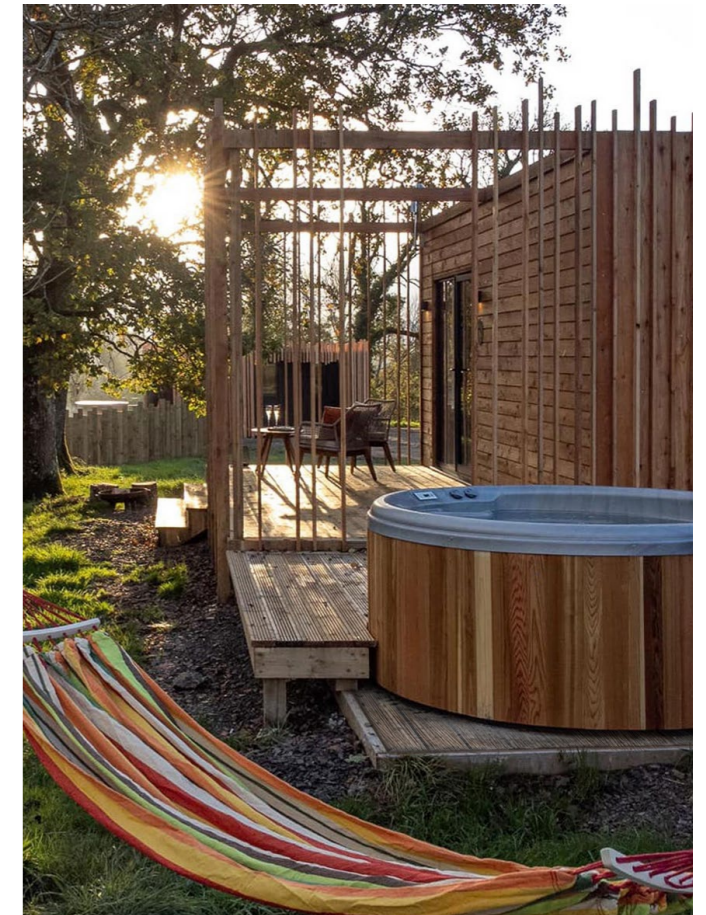
DESIGN INSPIRATION



The inspiration for our Merywen has been taken from traditional Japanese architecture and Zen simplicity. The structure collects all essentials in one place, eliminating the superfluous and creating a space that is neat and harmonious.

The juniper tree is one of the most popular types of bonsai to grow in Japan. Many Rinzai Zen temples in Japan have a juniper tree planted at the gateway.

Traditionally, Japanese buildings reflect a strong emphasis on their relationship with nature and their appreciation of wood in its natural form. The Merywen, with its clean and simple lines, is clad in untreated Welsh grown larch or douglas fir which will weather and age naturally over its lifetime, whilst the natural resins inside the wood protect it from rot and decay.

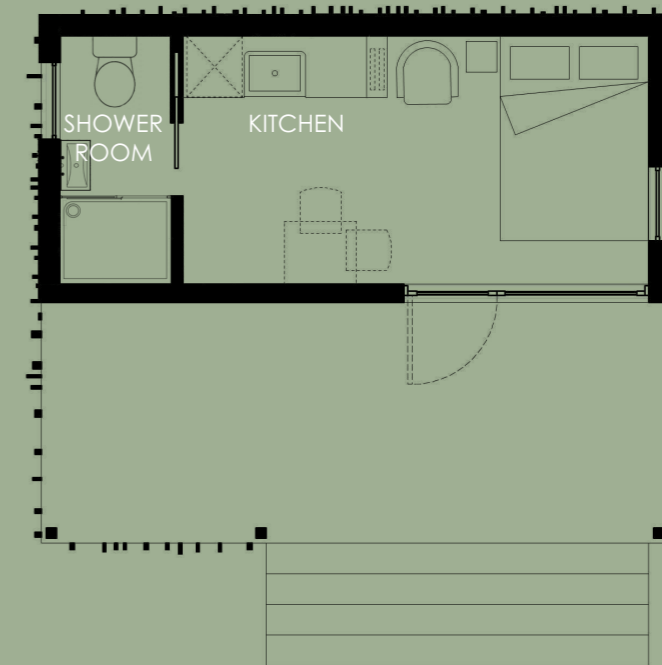




2.7 x 6m core 2.4 x 6m decking area

13.8m² Internal floor area

NOTES: Bespoke options can be developed to suit individual needs.



	STANDARD	OPTIONAL EXTRAS
CORE	insulated core High performance windows and doors Radiant heating panels	Sofa bed
KITCHEN	Fitted kitchen including sink & hob High level shelving	Fridge freezer Oven
SHOWER ROOM	Fitted shower room with shower Free standing basin and toilet	Compost toilet

NOTES:

The cabins will be delivered ready to be connected to the electricity, water supply and sewage systems. Customers will be responsible for final connections on site. Our cabins are well suited to off-grid living and we can advise on suitable options. During installation the impact on the site is minimal and foundations typically consist of screw piles. The cabins are delivered in sections, which are assembled on site. Costs for delivery and foundations are site specific and will be calculated after a survey has been conducted.

MATERIALS AND FITTINGS

Highly insulated core:

Our cabins feature a highly insulated core, using timber framing and wood fiber insulation, which provides a comfortable thermal environment in all weather. Sourced locally, we ensure minimal transport emissions and work closely with suppliers to provide quality assurance.

Home grown Welsh timber:

All of the cladding boards are larch or douglas fir and sourced from the local area. As untreated timber, the cladding becomes a silvery grey over time.



EPDM:

We source our EPDM for our roof coverings from the UK. EPDM has a low GWP (global warming potential) and can be reused and recycled into many different products. It has a life span of between 25-50 years and doesn't pollute rainwater so is an ideal material for rainwater harvesting.

Flooring Options:

Flooring options include Marmoleum and oak engineered board. The oak is smoothed and lacquer with a UV finish for enhanced durability, its natural tones providing a warm ambiance. Marmoleum has a very low carbon footprint. It is composed of 97% natural materials and uses 43% recycled materials.



Internal cladding:

We source all of our internal wood finishes from FSC certified manufactures and renewable source of timber. Wood used as internal cladding offers excellent strength and durability

Windows & doors:

The windows are powder coat aluminium with high performance double glazing with the option for triple glazing. The front door is hardwood with a painted finish.

Heating:

The Merywen requires minimal heating due to its highly insulated core, but radiant heating panels and electric bathroom radiators are included as standard in all models.



INTERIOR OPTIONS

Internal fittings:

The fixtures and fittings have been carefully curated to compliment the natural materials used throughout the cabin.

Whenever possible we specify LED and energy saving light fixtures to make sure lighting systems are efficient and long lasting.

The interior design of the cabin can be customised to suit individual preferences and a choice of materials, colours and textures are available





QUALITY & CRAFTSMANSHIP



Trust, reputation and reliability are the hallmarks of our chosen craftspeople. Our inhouse project managers undertake regular site visits to ensure projects are delivered to the highest standard.

Our use of quality components including internal cladding, high-quality windows and doors, Welsh larch or douglas fir cladding and the highly insulated core, work together to deliver a durable, high-performance, and economical space.

The Merywen has been ergonomically designed with the process of delivery and assembly in mind. Our team will work with you to help ensure that site-specific obstacles that could impact

construction, delivery and assembly are carefully logged and assessed. Our processes have been streamlined to deliver ease, peace of mind and long-lasting value.

We have developed robust quality monitoring systems to ensure that the construction of our units meet the high standards we have imposed on ourselves. These standards have been influenced by our professional training and experience, together with feedback from end users. We monitor our processes at regular intervals to ensure we learn from each stage of each and every build. Upon delivery, our team will undertake final checks to ensure the Merywen is assembled to agreed parameters.



19 new road
llandeilo
carmarthenshire
sa19 6dd

01558 822009

info@mwd.wales

mwd.wales